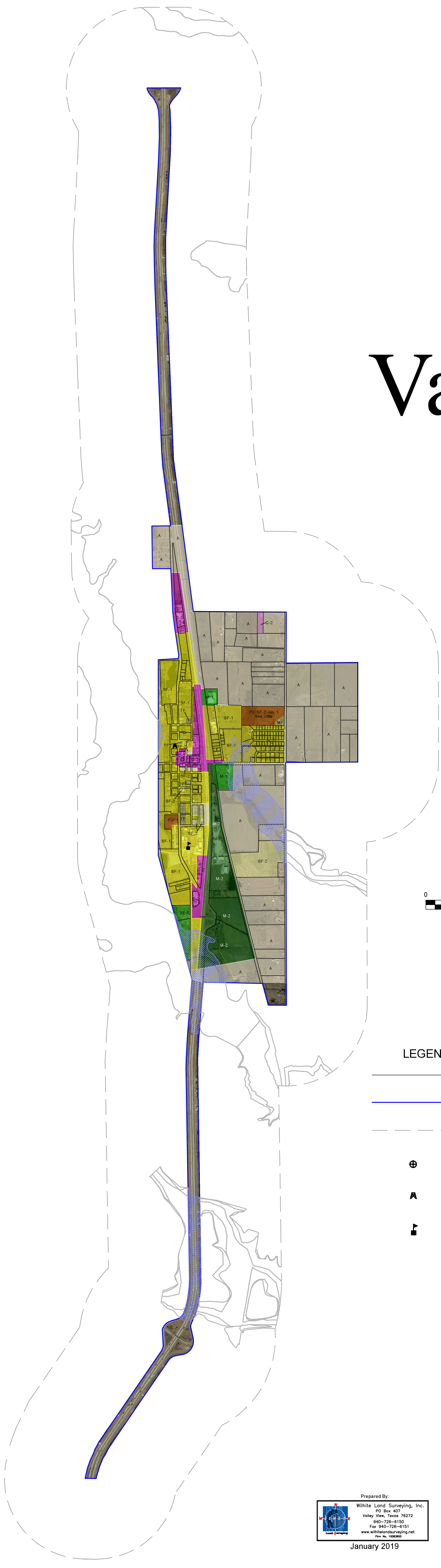


City of Valley View



LEGEND

- Parcel
- City Limits
- Extraterritorial Jurisdiction (ETJ)
- City Hall
- Water Tower
- School

OFFICIAL ZONING MAP
CITY OF VALLEY VIEW, TX
As adopted on _____, 2019

ATTEST: _____ APPROVED: _____
City Secretary Mayor

Note:
1.) Floodplain Overlay District and additional floodplain data scaled to map per FIRMs 48097C0425C (eff. 1/16/2008) and 48097C0550C (eff. 1/16/2008).
2.) PD-SF-2-NO. 1 is a special planned development rezoned per Ordinance No. 04122018, City of Valley View, TX.

DISCLAIMER:
This map was generated by data gathered from the Texas Department of Transportation, FEMA, and the Cooke County Appraisal District. The City of Valley View does not guarantee the correctness or accuracy of any feature on this map. This map is for illustration purposes only and is not suitable for site-specific decision making. This data is subject to constant changes and may not be complete, accurate or current.

ZONING DISTRICTS

- | | |
|---|---|
| Agricultural District | C-1 Commercial District |
| M-1 Manufacturing/Industrial District | M-2 Manufacturing/Industrial District |
| PD Planned Development District | SF-1 Single Family Residential District |
| TH Townhouse Residential District | SF-2 Single Family Residential District |
| C-2 Commercial District - General | C-3 Commercial District - Special |
| MF Multifamily District | FP Floodplain Overlay District |
| MH-1 Manufactured Home District | MH-2 Manufactured Home Park District |
| SF-E Single Family Residential District | TF Two Family Residential (Duplex) District |

Prepared By:
White Land Surveying, Inc.
PO Box 407
Valley View, Texas 76272
940-726-6150
Fax 940-726-6151
www.whitelandsurveying.net
File No. 1008300

January 2019